



**ICON**

WORLD OF TILE

800x

160

cm

GLAZED  
VITRIFIED TILES  
COLLECTION



**METALLIC**

# INTRODUCTION

||| The ceramic industry is a wide industry with a multitude of products. In this industry, when it comes to the quality of ceramic surfaces, Icon is a leading name. We manufacture and export a variety of digital glazed vitrified tiles. These tiles are crafted to provide our customers with a high standard of living with products that are the mark of sophistication and quality.

We understand that every space is different and therefore we have customized tiles of different sizes that are suitable to fit every space. Now, you don't have to compromise about your design style and can give your space the perfect ambiance that you always desired with Icon.

ONE SIZE TO  
ADAPT TO  
DIFFERENT  
SETTINGS.



80x  
160  
cm



# AN ADVENTUROUS EXPLORATION



Surfaces that inspire  
**different moods.**



The magnificent landscapes of Mother Earth offer many moods and harbor varied feelings that encapsulate a million memories. Inspired by these magnificent landscapes, we designed surfaces that elevate the aura of a place.

# WHERE CAN OUR TILES BE INSTALLED?



Give a refreshing makeover  
to your **WALLS**



Our ceramic tiles reach their utmost expression in 80x160cm size. They bring decorative harmony to every space they are installed. They bring the focus to the walls and floors of the space with their luxurious appeal. In addition to the walls and the floors, these tiles can also be applied to small-sized furniture.

These tiles bring style and passion to a place with their impeccable look and unique view.



Create fabulous  
**FLOORS**



Give customized look to your  
**FURNITURE**

Small-sized furniture includes the staircase, tabletops, basins, pillars, benches, etc.

# YOUR SPACE, OUR TILING SOLUTION!

The 80x160cm tiles reflect a fusion of elegance and the profound beauty of nature. Their trendy natural hues and prolific designs uplifted with extraordinary textures define the style of spaces of all kinds.

These tiles are crafted keeping in mind the different moods of residential and commercial spaces. With details in every touch and unique design of these tiles, one can deliver a defined message about the decor fulfilling the need of urban architectural styles.



Residential space

LIVING ROOM  
KITCHEN  
BEDROOM  
BATHROOM  
WORK SPACE  
KIDS ROOM

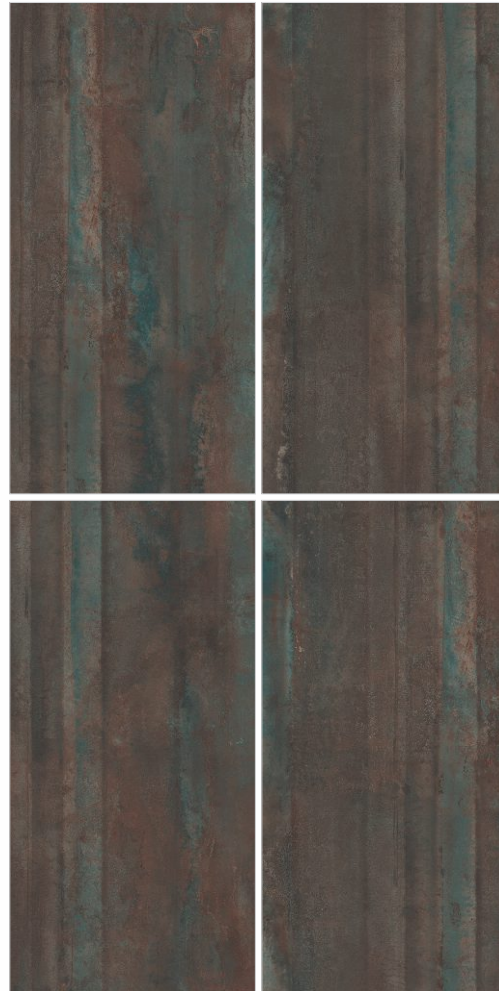
Commercial space

HOTEL  
RESTAURANT  
CORPORATE OFFICE  
PUBLIC SPACES  
HOSPITAL  
BANK



# DESIRE BEACH





## DESIRE BEACH

Random - 4	Finish - METALLIC
Size - 80x160cm	Thickness - 9mm

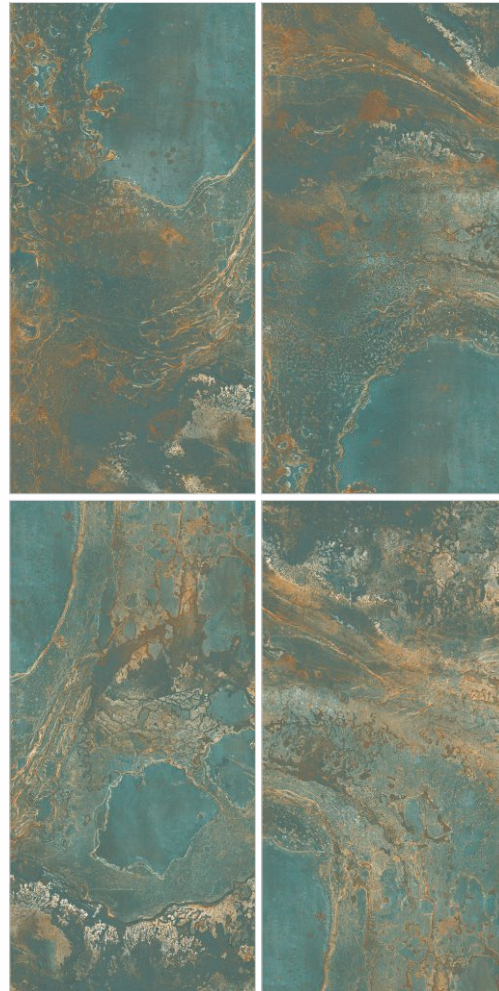
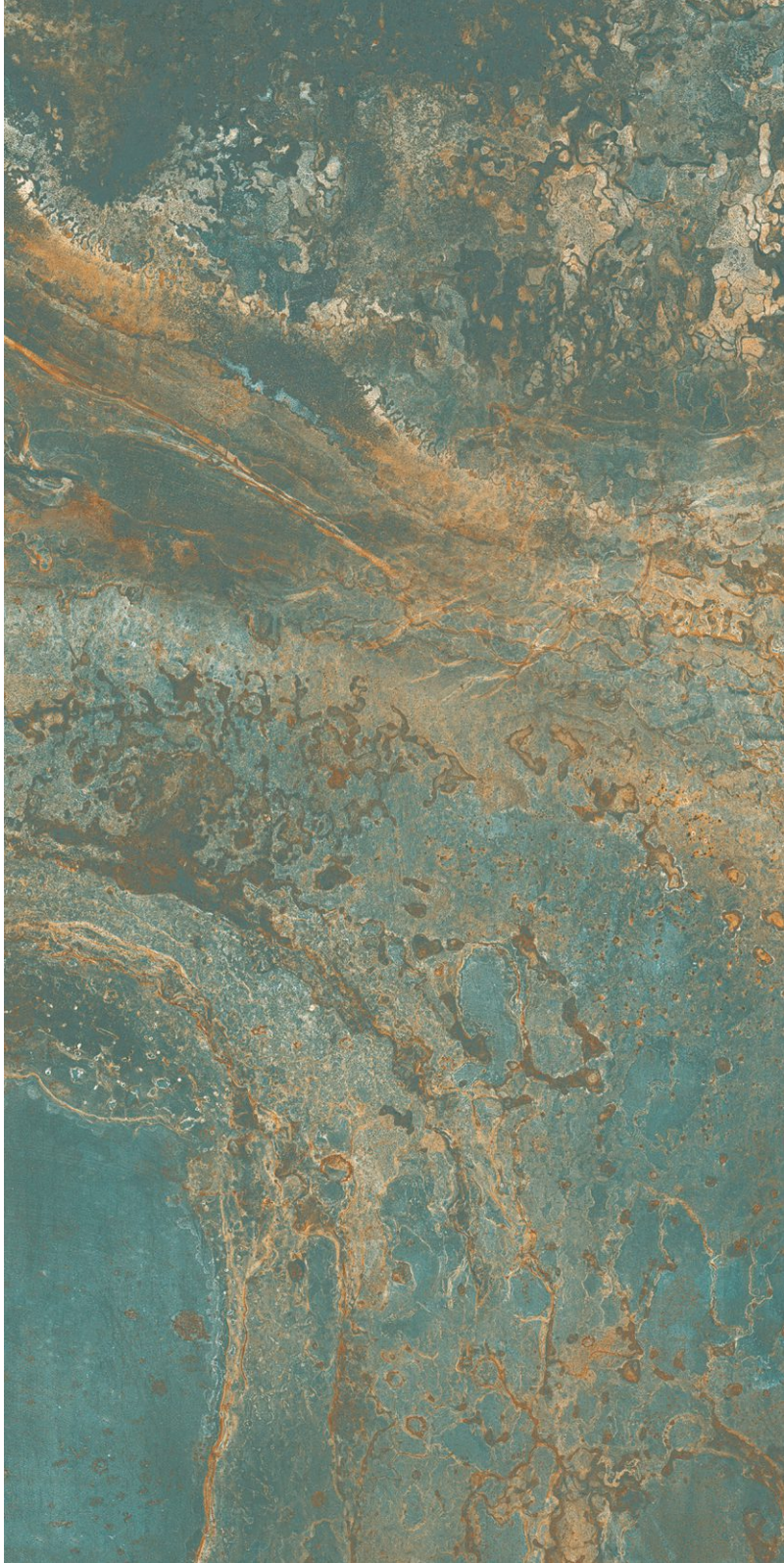
METALLIC



METALLIC

# BORIC EMERALD





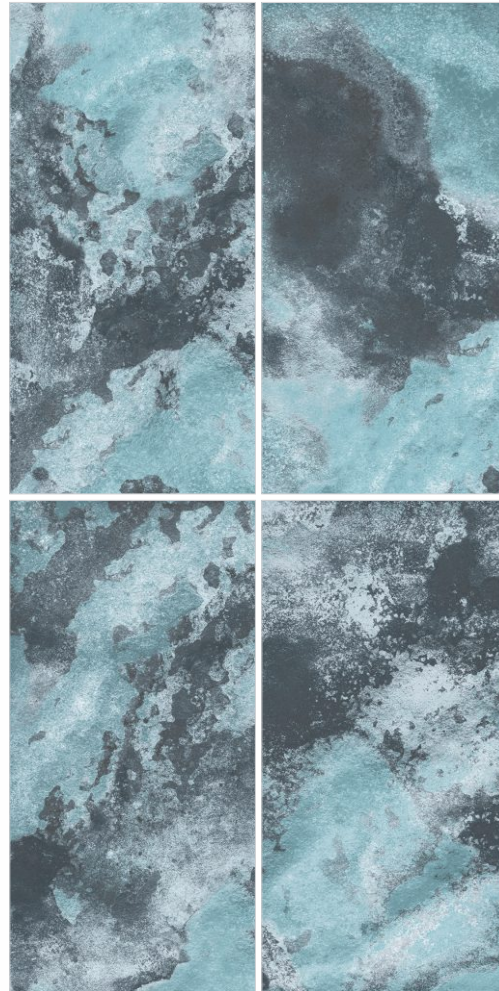
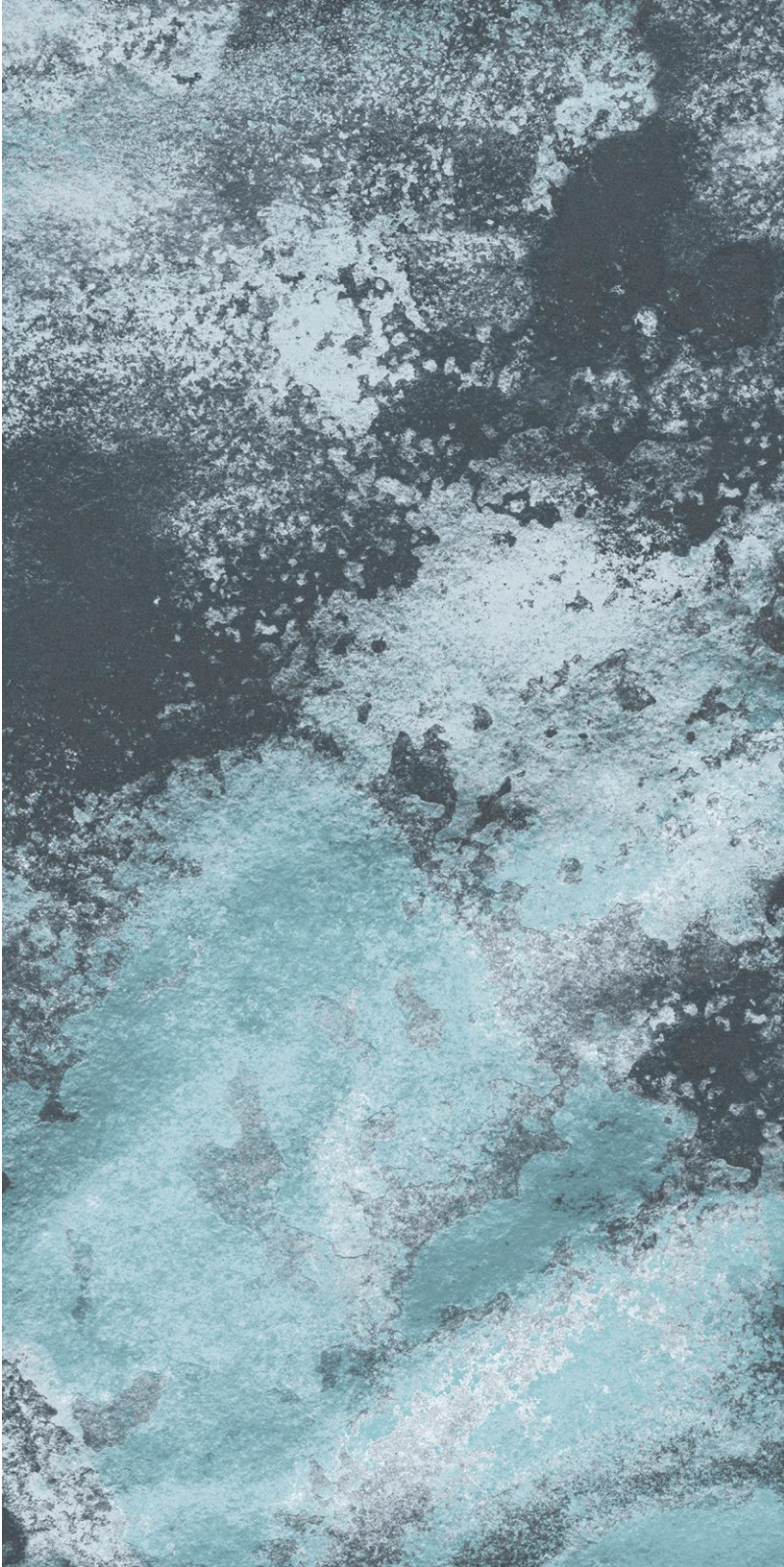
## BORIC EMERALD

Random - 4	Finish - METALLIC
Size - 80x160cm	Thickness - 9mm

METALLIC

# NEON ARTIC



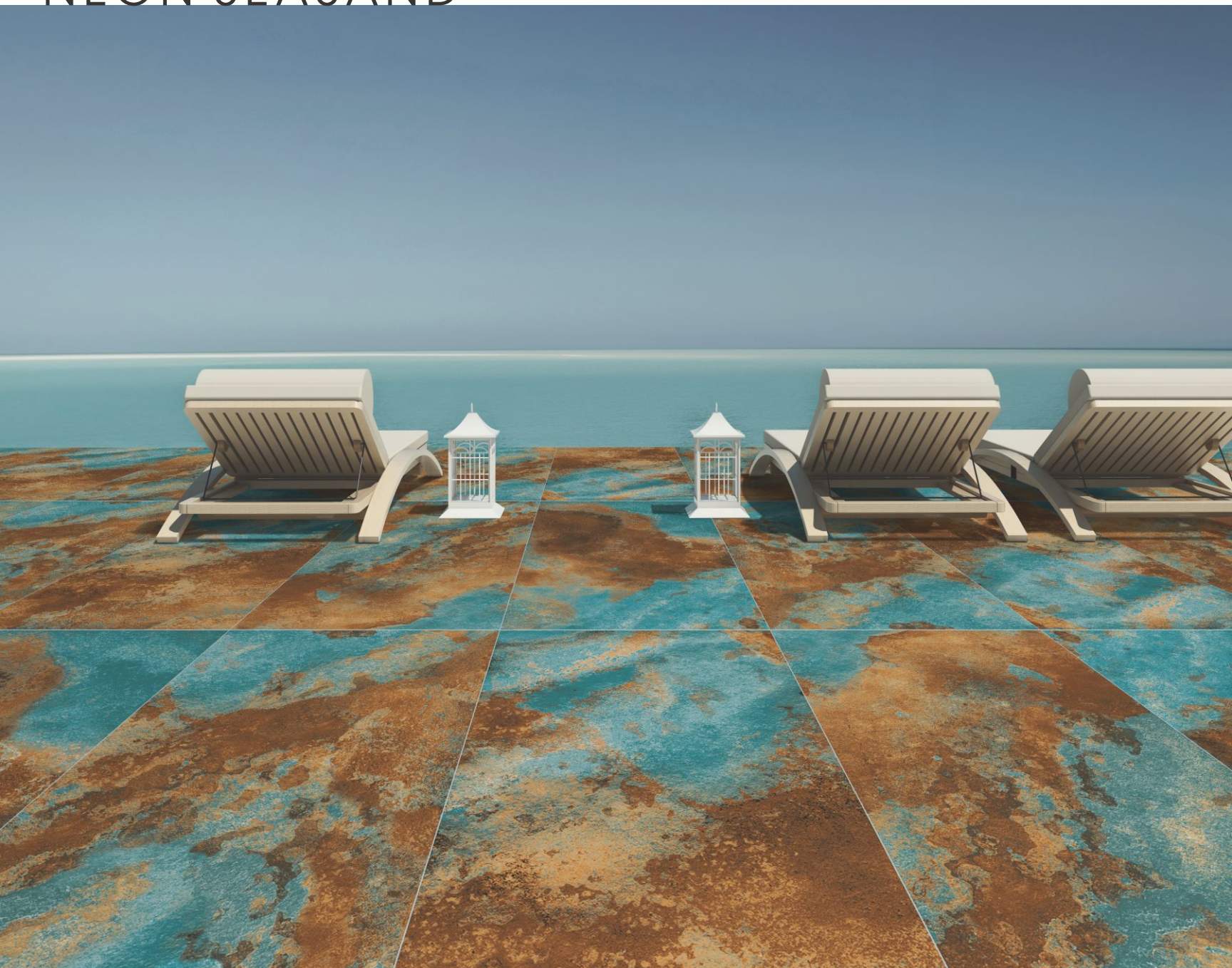


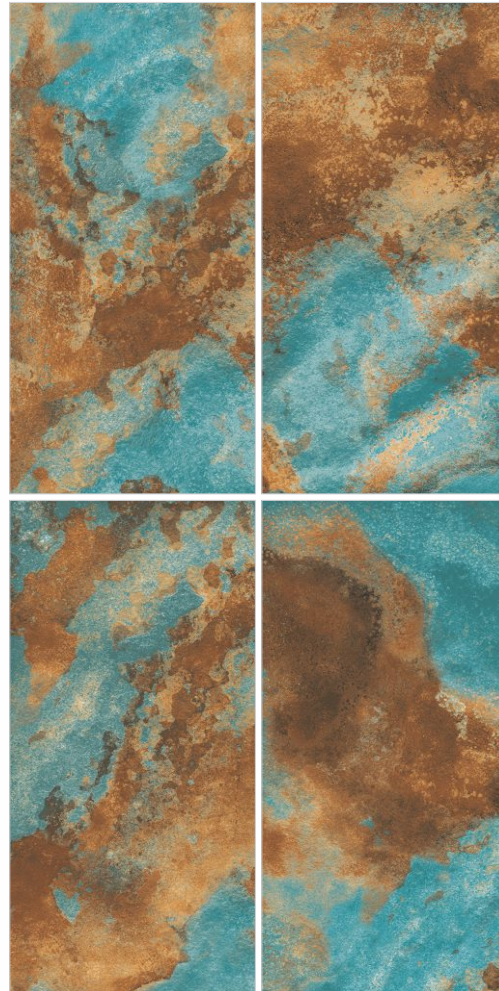
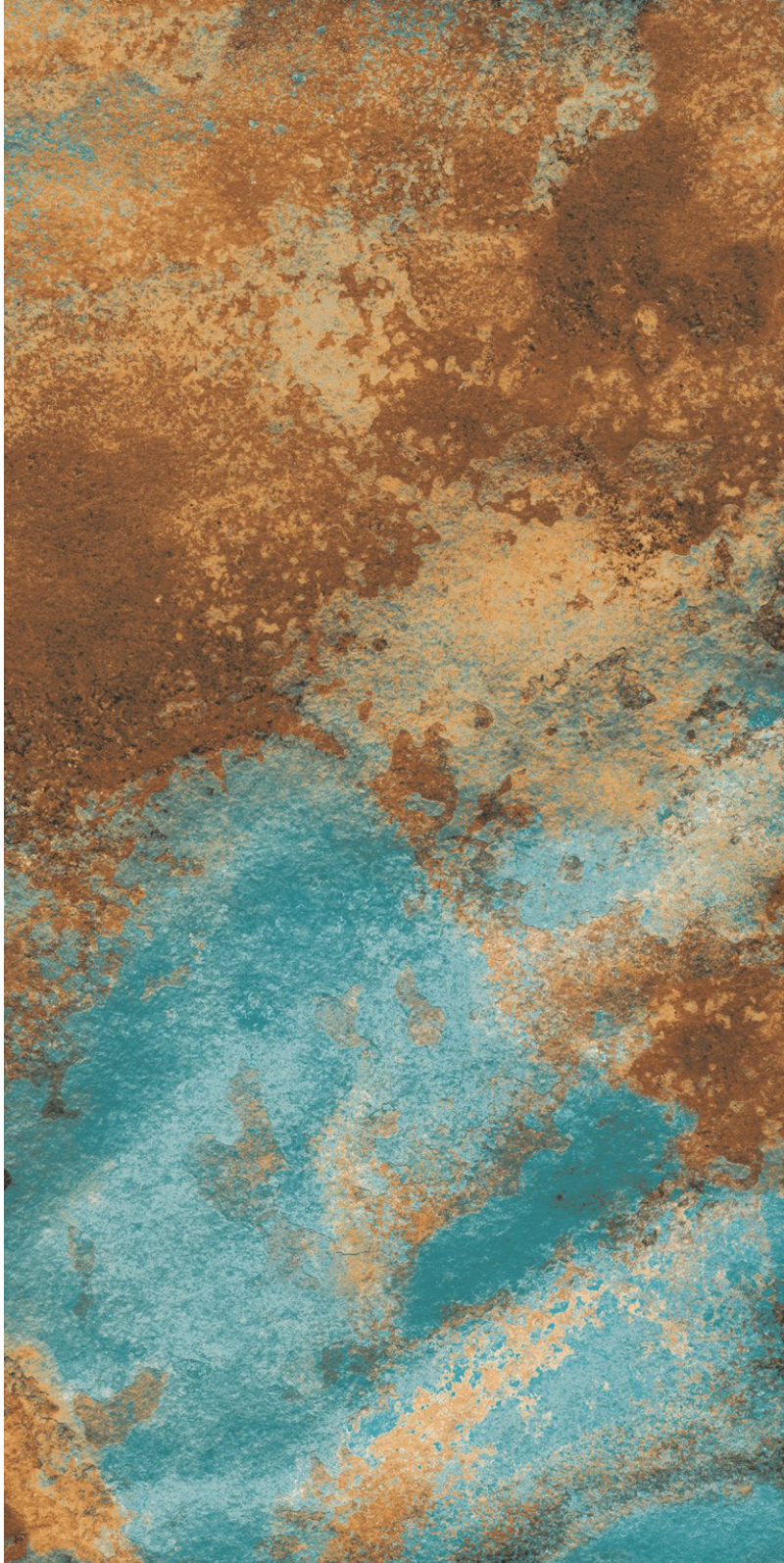
## NEON ARTIC

Random - 4	Finish - METALLIC
Size - 80x160cm	Thickness - 9mm

METALLIC

# NEON SEASAND





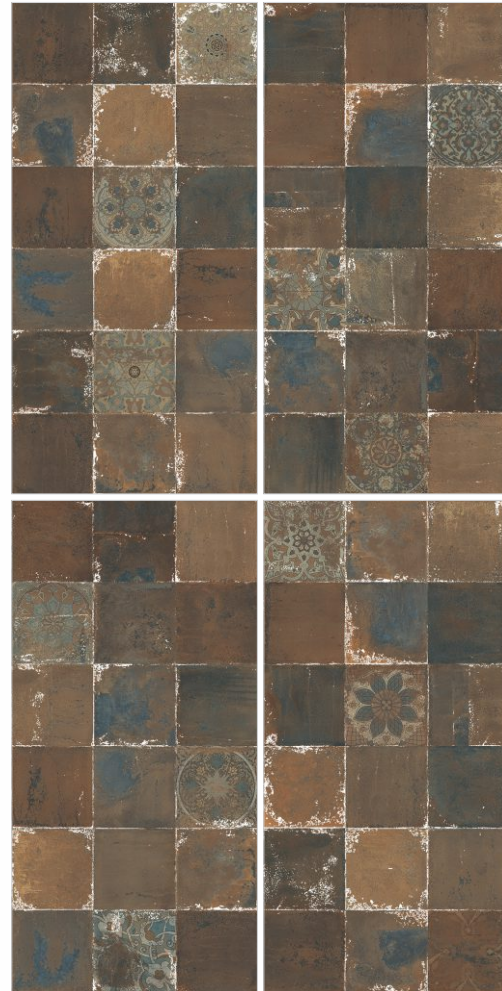
## NEON SEASAND

Random - 4	Finish - METALLIC
Size - 80x160cm	Thickness - 9mm

METALLIC

# TITAN METAL





## TITAN METAL

Random - 4	Finish - METALLIC
Size - 80x160cm	Thickness - 9mm

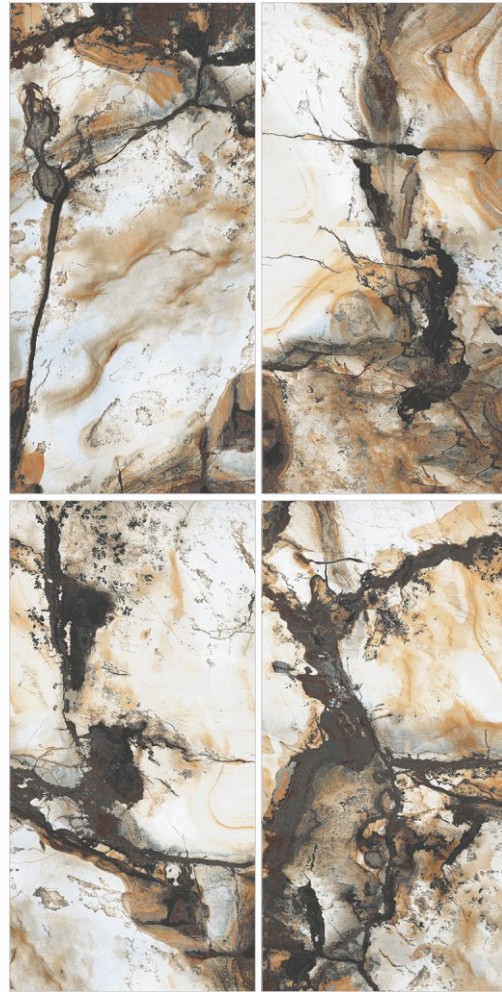
METALLIC



METALLIC

# TYPHOON GOLD





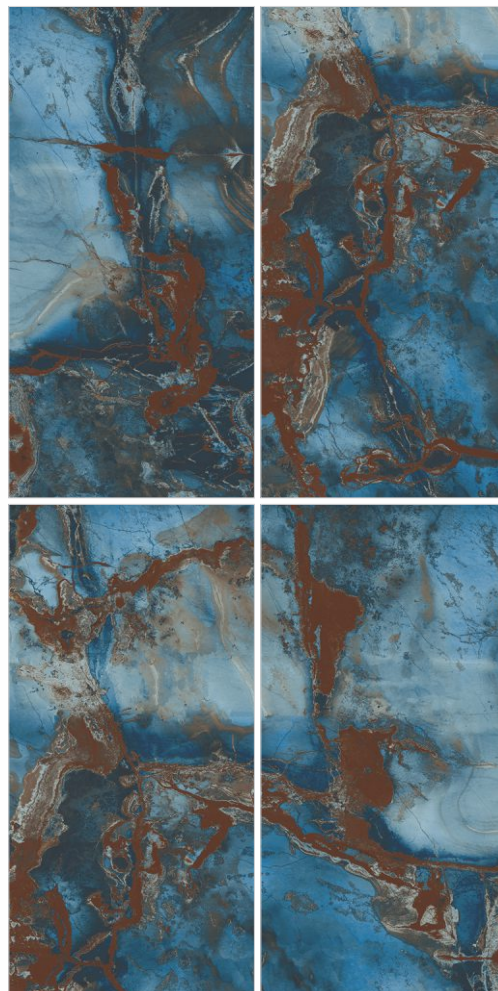
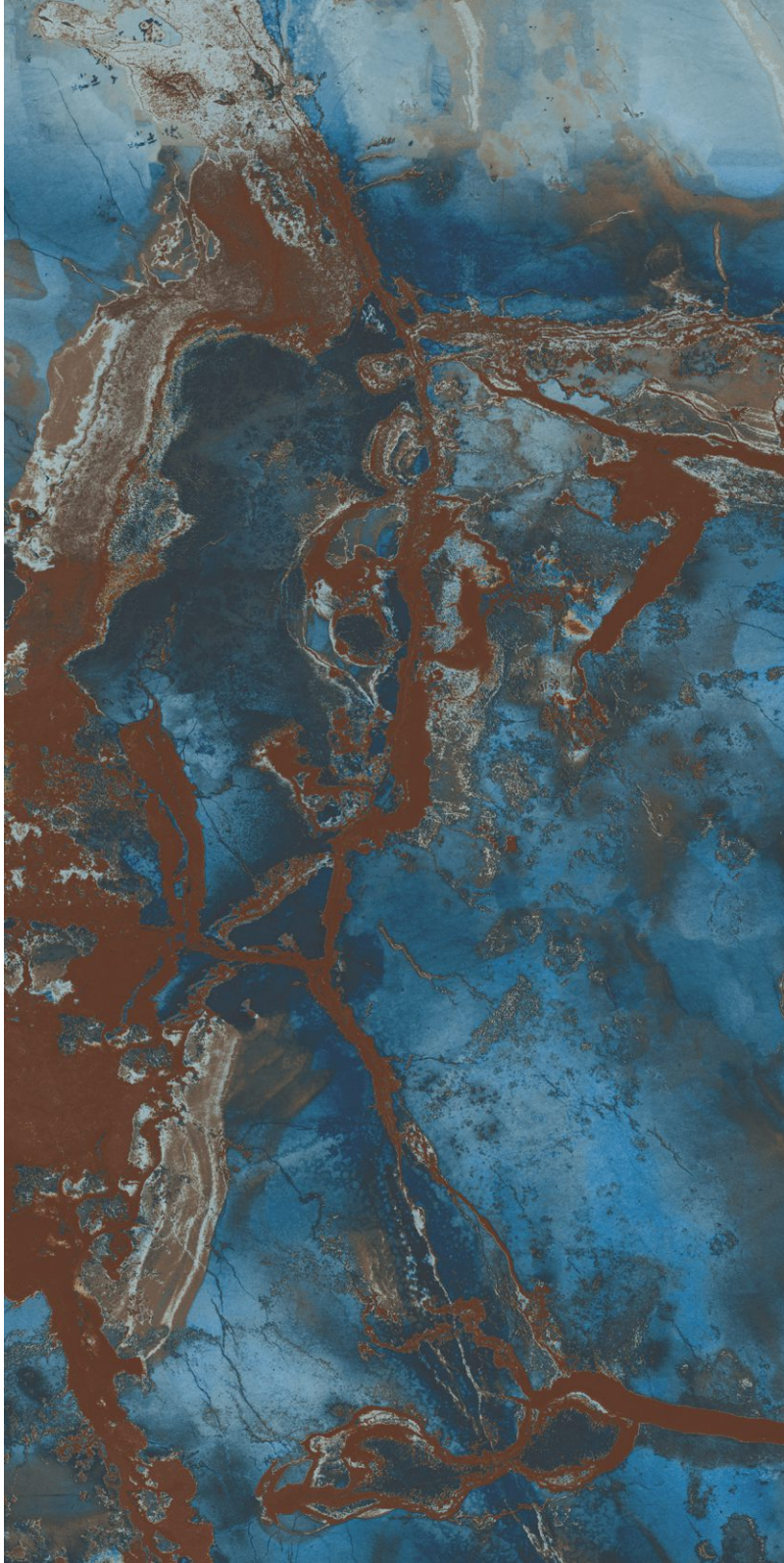
## TYPHOON GOLD

Random - 4	Finish - METALLIC
Size - 80x160cm	Thickness - 9mm

METALLIC

# TYPHOON TORQUISH





## TYPHOON TORQUISH

Random - 4	Finish - METALLIC
Size - 80x160cm	Thickness - 9mm

METALLIC

## TECHNICAL SPECIFICATION

CHARACTERISTIC	STANDARD AS PER ISO-13006/EN14411 GROUP BIa	MEAN VALUE OF ICON PGVT	MEAN VALUE OF ICON GVT	Method of Testing
<b>REGULATORY PROPERTIES</b>				
Deviation in length & width	± 0.5 %	± 0.1 %	± 0.1 %	ISO-10545-2
Deviation in thickness	± 5.0 %	± 4.0 %	± 4.0 %	ISO-10545-2
Straightness in side	± 0.5 %	± 0.1 %	± 0.1 %	ISO-10545-2
Rectangularity	± 0.6 %	± 0.1 %	± 0.1 %	ISO-10545-2
Surface flatness	± 0.5 %	± 0.2 %	± 0.2 %	ISO-10545-2
Color difference	Unaltered	No change	No change	ISO-10545-16
Glossiness	As per mfg.	Min. 90%	Min. 4%	GLOSSOMETER
<b>STRUCTURAL PROPERTIES</b>				
Water absorption	< 0.50 %	< 0.20 %	< 0.20 %	ISO-10545-3
Apparent density	> 2.0 g/cc	> 2.10 g/cc	> 2.10 g/cc	DIN 51082
<b>MASSIVE MECHANICAL PROPERTIES</b>				
Modulus of rupture	Min. 35 N/mm <sup>2</sup>	Min. 40 N/mm <sup>2</sup>	Min. 40 N/mm <sup>2</sup>	ISO-10545-4
Breaking strength	Min. 1300 N	Min. 2000 N	Min. 2000 N	ISO-10545-4
Impact resistance	As per mfg.	Min. 0.55	Min. 0.55	ISO-10545-5
<b>SURFACE MECHANICAL PROPERTIES</b>				
Surface abrasion resistance	As per mfg	Min. Class-3	Min. Class-4	ISO-10545-7
MOH's hardness	As per mfg	Min. 4	Min. 5	EN 101
<b>THERMO HYGROMETRIC PROPERTIES</b>				
Frost resistance	No damage	No damage	No damage	ISO-10545-12
Thermal shock resistance	No damage	No damage	No damage	ISO-10545-9
Moisture expansion	Nil	Nil	Nil	ISO-10545-10
Thermal expansion (COE)	Max. 9.0 x 10 <sup>-6</sup>	Max. 6.5 x 10 <sup>-6</sup>	Max. 6.5 x 10 <sup>-6</sup>	ISO-10545-8
<b>CHEMICAL PROPERTIES</b>				
Chemical resistance	No damage	No damage	No damage	ISO-10545-13
Stain resistance	Resistant	Resistant	Resistant	ISO-10545-14
<b>SAFETY PROPERTIES</b>				
Slip resistance	As per mfg	> 0.40	> 0.40	ISO-10545-17
Fire resistance	As per mfg	Fireproof	Fireproof	N.A.
Lead & Cadmium given off by glazed tiles	As per mfg	Does not yield Pb. & Cd.	Does not yield Pb. & Cd.	ISO-10545-15

## PACKING DETAILS

Size	Normal Thickness	No. of Tiles/Box	Coverage Area/Box		Wt. of Box (approx)
80x160cm	9 mm	2 pcs	2.56 sq. mtr.	27.55 sq. ft.	53.50 kg



 **Unit - 1**

**ICON GRANITO PVT. LTD.**

Survey No. 8/14 , Ghuntu Road,  
Mahendra Nagar, Morbi - 363 642, Gujarat, INDIA

---

 **Unit - 2**

**ACECON VITRIFIED PVT. LTD.**

8-A National Highway, Matel Road, Matel,  
Ta. Wankaner - 363 621 , Dist. Morbi, Gujarat, INDIA

---

 **Unit - 3**

**DURACON VITRIFIED PVT. LTD.**

8-A National Highway, Sartanpar Road,  
Tal. Wankaner - 363 621 , Dist. Morbi, Gujarat, INDIA

---

[export@iconworldoffile.com](mailto:export@iconworldoffile.com)

[www.iconworldoffile.com](http://www.iconworldoffile.com)